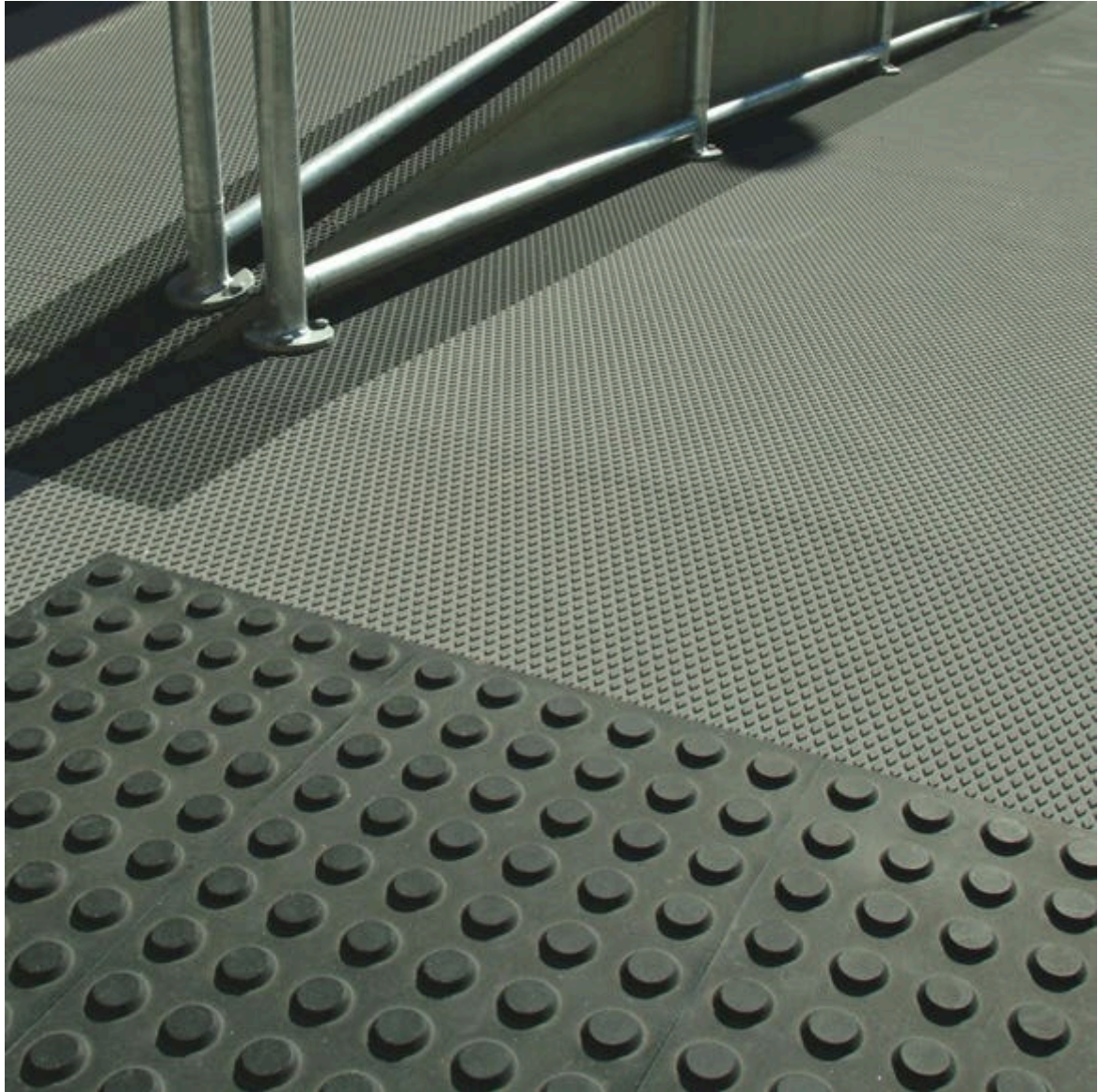




PolyPad Tactiles

Product Images



Short Description

PolyPad Tactiles

Description

Manufactured from premium polymeric materials and will contour to any substrate indoor and outdoor.

- Easily shaped with a knife and are dimensionally stable so they won't move once bonded to concrete, bitumen, timber, pavers and most other substrates.
- Installation is completed by applying adhesive and sticking them down - 2 easy steps! (GST free).
- Flexible, easy to install, UV Stable and will retain colour over time.
- Complies to AS/NZS 1428 part 4, Building Code of Australia.
- Available in ivory, yellow, grey, black, sunset orange, terracotta, sky blue, ocean blue & storm grey.
- A0488 Installation Kit contents: 600x100mm cutting template, masking tape, snap blade knife, trowel, adhesive (covers 1.5 pads) and installation instructions.

Quantity required (based on 900x600 Pads):

- **Per Square Metre: 1.1qty/m²**
- **Per Lineal Metre at 600mm wide: 1.1qty/lm**

Product Options

Stair Nosing Tactile Colour:	Black
	Grey
	Ivory
	Ocean Blue
	Sky Blue
	Storm Grey
	Sunset Orange
	Terracotta
	Yellow
Tactile Type:	Hazard Indicator
	Directional Indicator
Tactile Dimensions:	300 x 900mm
	600 x 300mm
	600 x 900mm

